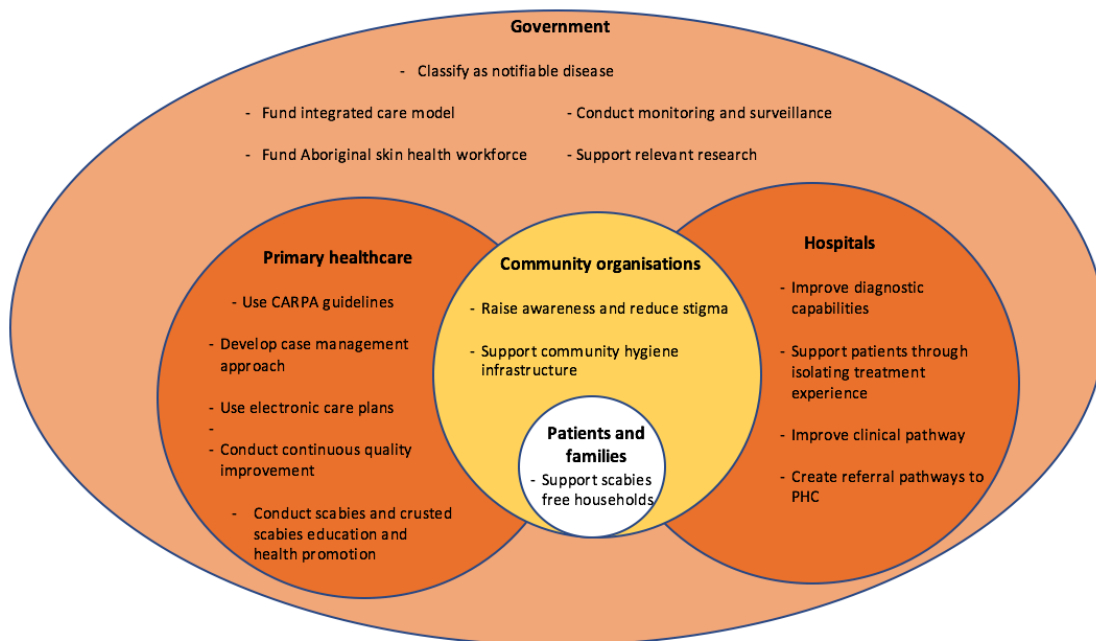


INTEGRATED APPROACH TO PREVENTION AND CONTROL OF CRUSTED SCABIES



Government

- Classify as a notifiable disease to support standardised disease definition and surveillance
- Fund integrated care model to ensure continuity of care is provided across disease lifecourse
- Conduct monitoring and surveillance to track transmission and prevalence
- Fund Aboriginal skin health workforce to support local diagnosis, treatment and prevention
- Support relevant research to advance knowledge of best practice

Hospitals

- Support patients through treatment to reduce feelings of isolation and increase treatment completion
- Establish clinical pathway to facilitate care and discharge to the community
- Create referral pathways to PHC to ensure ongoing patient care

Primary healthcare

- Use CARPA guidelines to follow best practice
- Improve diagnostic capabilities to ensure accurate diagnosis
- Develop case management approach to ensure routine treatment and support for patients
- Use electronic care plans to enable timely follow-up
- Conduct continuous quality improvement to capture accurate data and promote improvement in delivery of care in accordance with CARPA guidelines
- Conduct scabies and crusted scabies education and health promotion to increase awareness and encourage health-seeking behaviour

Community organisations

- Raise awareness to reduce stigma
- Support community hygiene infrastructure to enable scabies free zones

Patients and families

- Support scabies free households by treating the entire household for scabies